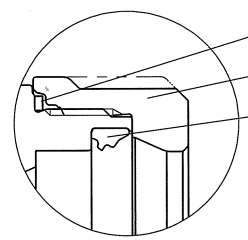
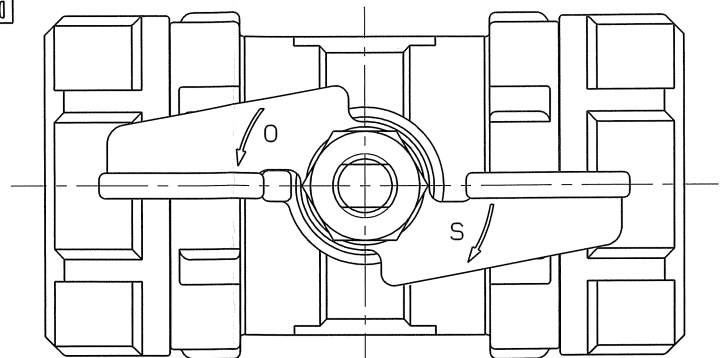
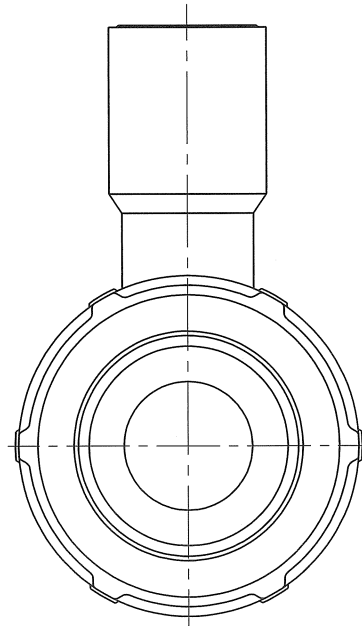
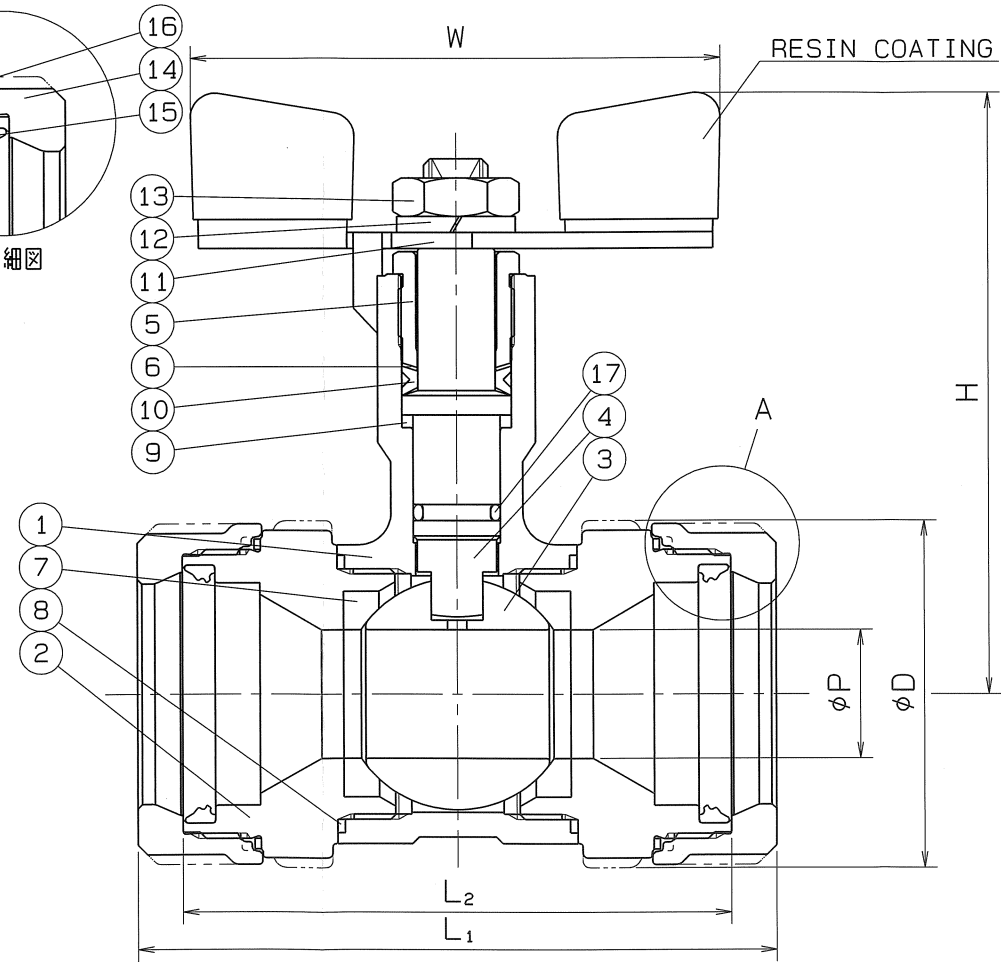


◇ 0000-SWVBX \*030

SIZE	P	L <sub>1</sub>	L <sub>2</sub>	H	W	D	Q, TY
13 Su	10	78	70	83	60	33	
20 Su	15	90	80	87	60	38	
25 Su	20	97	85	94	80	47	
30 Su	20	99	85	94	80	54	



A部詳細図



SPEC.			TEST PRESS.	
FLUID			SHELL	HYDRO 3.5 MPa
PRESS.	MAX	MPa	SEAT	AIR 0.6 MPa
TEMP.	MAX	℃	AIR	MPa

No.3 13Su MATERIAL : SUS 304  
\*MODIFIED P.T.F.E.

17	O RING	1	FKM	
16	LOOSE STOPPER	2	SUS 304CSP	
15	RUBBER PACKING	2	SYNTHETIC RUBBER (HNBR)	
14	RATCHET NUT	2	SCS 13	
13	HEXAGON NUT	1	SUS 304	
12	SPRING WASHER	1	SUS 304	
11	HANDLE	1	SUS 304	
10	GLAND PACKING	1	P.T.F.E.	
9	BEARING	1	P.T.F.E.	CARBON FILLED
8	GASKET PACKING	2	P.T.F.E.	
7	BALL SEAT	2	P.T.F.E.	*
6	WASHER	1	SUS 304CSP	
5	GLAND BUSHING	1	SCS 13	
4	STEM	1	SUS 304	
3	BALL DISC	1	SCS 13A	
2	BODY CAP	2	SCS 13	
1	BODY	1	SCS 13	

No.	NAME OF PARTS	Q.TY	MATERIALS	REMARKS
NAME NICE JOINT ENDS REDUCED BORE LONG NECK TYPE MINI BALL VALVES				
TYPE NJX-200		SIZE 13~30Su		
Dwg.No. XBAMS-0003◇		DATE MAR. 14. 2023		
THIRD ANGLE PROJECTION METHOD		SCALE		

APPROVED	CHECKED	DESIGNED	DRAWN

O. N. INDUSTRIES LTD.