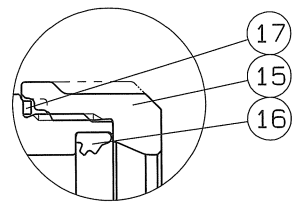


◇ 5000-SWV8X "ON" OMO

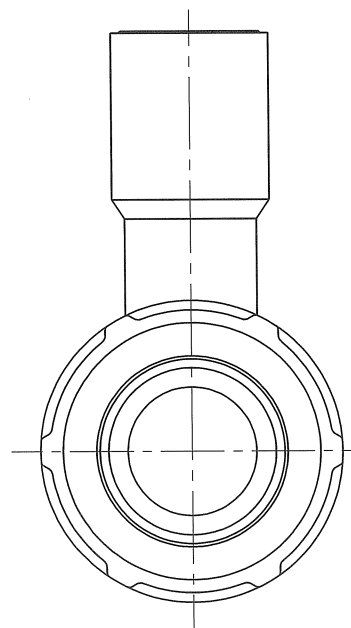
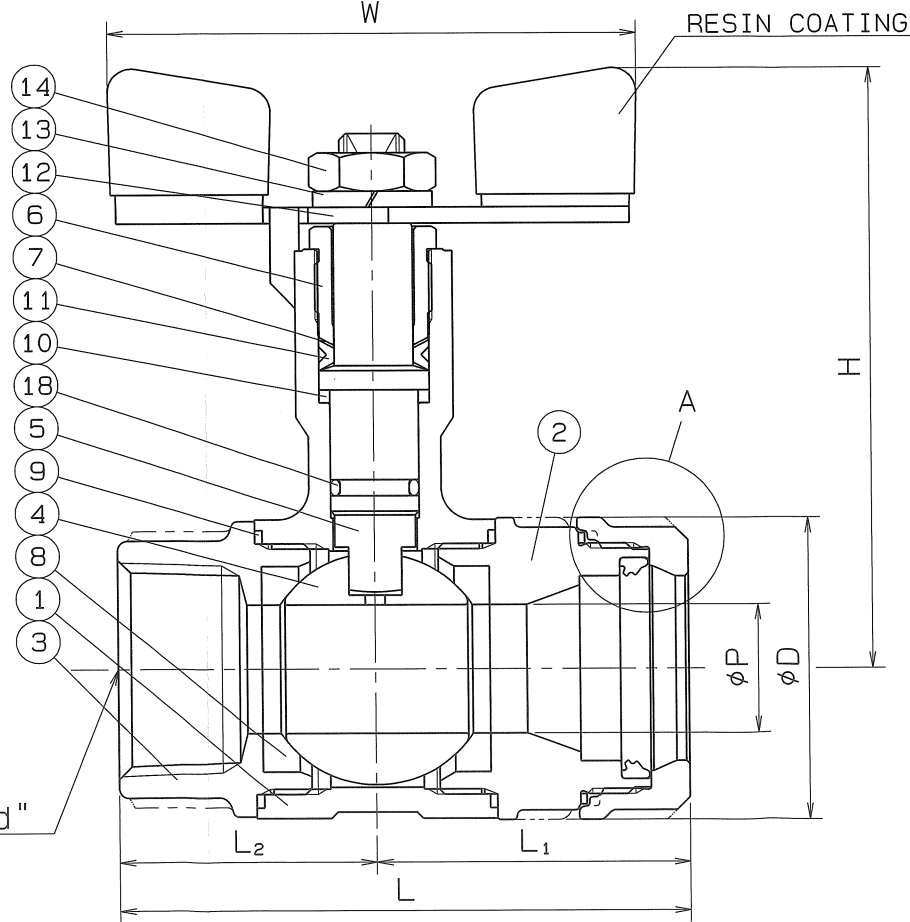
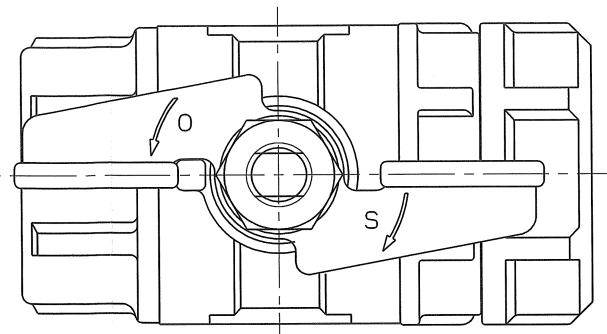
SIZE	d	P	L	L ₁	L ₂	H	W	D	Q, TY
20Su x 3/4	Rc 3/4	15	80	45	35	87	60	38	
25Su x 1	Rc 1	20	88.5	48.5	40	94	80	47	

A
B
C
D
E
F

A
B
C
D
E
F



A部詳細図



SPEC.		TEST PRESS.	
FLUID		SHELL	HYDRO 3.5 MPa
PRESS.	MAX MPa	SEAT	AIR 0.6 MPa
TEMP.	MAX ℃	AIR	MPa

PIPE THREADS CONFORM WITH "JIS B 0203"
*MODIFIED P.T.F.E.

No.	NAME OF PARTS	Q. TY	MATERIALS	REMARKS
18	O RING	1	FKM	
17	LOOSE STOPPER	1	SUS 304CSP	
16	RUBBER PACKING	1	SYNTHETIC RUBBER (HNBR)	
15	RATCHET NUT	1	SCS 13	
14	HEXAGON NUT	1	SUS 304	
13	SPRING WASHER	1	SUS 304	
12	HANDLE	1	SUS 304	
11	GLAND PACKING	1	P.T.F.E.	
10	BEARING	1	P.T.F.E.	CARBON FILLED
9	GASKET PACKING	2	P.T.F.E.	
8	BALL SEAT	2	P.T.F.E.	*
7	WASHER	1	SUS 304CSP	
6	GLAND BUSHING	1	SCS 13	
5	STEM	1	SUS 304	
4	BALL DISC	1	SCS 13A	
3	BODY CAP (B)	1	SCS 13	Rc "d"
2	BODY CAP (A)	1	SCS 13	
1	BODY	1	SCS 13	

NAME	NICE JOINT AND SCREWED ENDS REDUCED BORE LONG NECK TYPE MINI BALL VALVES		
TYPE	NJX-202NF	SIZE	20, 25Su
DWG.No.	XBAMS-0005◇	DATE	MAR. 14. 2023
THIRD ANGLE PROJECTION METHOD	SCALE		

APPROVED	CHECKED	DESIGNED	DRAWN

O. N. INDUSTRIES LTD.

△	
△	
△	