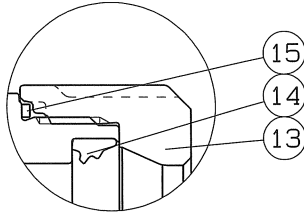
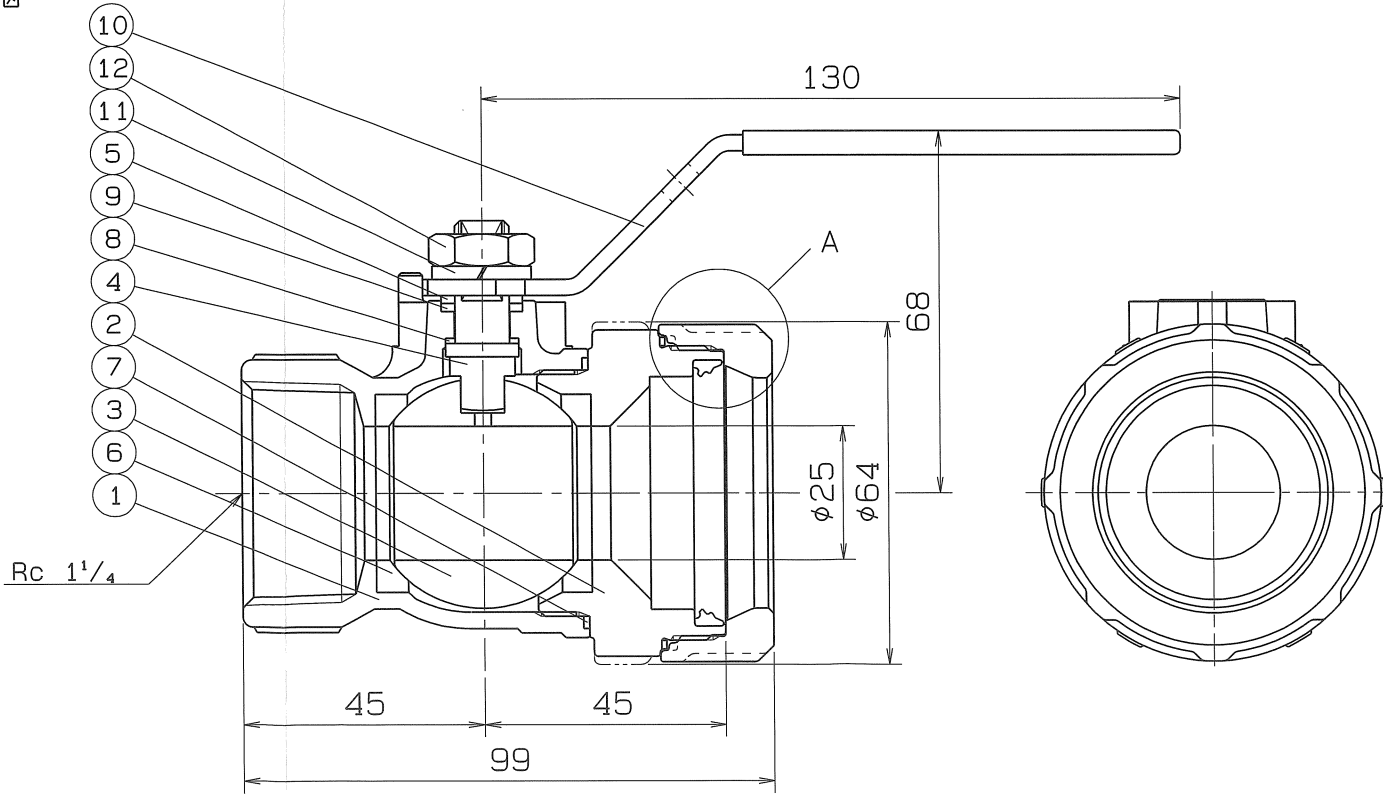
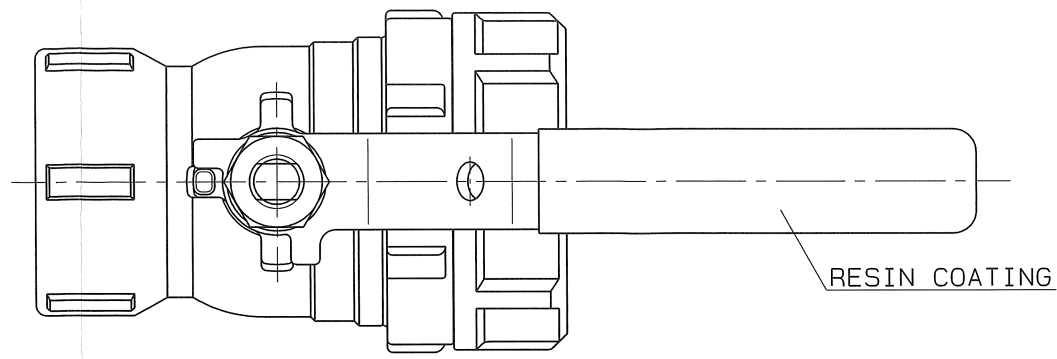


A
B
C
D
E
F

A
B
C
D
E
F



A部詳細図



SPEC.			TEST PRESS.	
FLUID			SHELL	HYDRO 3.5 MPa
PRESS.	MAX	MPa	SEAT	AIR 0.6 MPa
TEMP.	MAX	℃	AIR	MPa

PIPE THREADS CONFORM WITH "JIS B 0203"
*MODIFIED P.T.F.E.

No.	NAME OF PARTS	Q.TY	MATERIALS	REMARKS
15	LOOSE STOPPER	1	SUS 304CSP	
14	RUBBER PACKING	1	SYNTHETIC RUBBER (HNBR)	
13	RATCHET NUT	1	SCS 13	
12	HEXAGON NUT	1	SUS 304	
11	SPRING WASHER	1	SUS 304	
10	HANDLE	1	SUS 304	
9	THRUST BEARING	1	P.T.F.E.	CARBON FILLED
8	THRUST PACKING	1	P.T.F.E.	CARBON FILLED
7	GASKET PACKING	1	P.T.F.E.	
6	BALL SEAT	2	P.T.F.E.	*
5	GLAND	1	SUS 316	
4	STEM	1	SUS 316	
3	BALL DISC	1	SCS 13A	
2	BODY CAP	1	SCS 13	
1	BODY	1	SCS 13	

NAME NICE JOINT AND SCREWED ENDS
MINI BALL VALVES

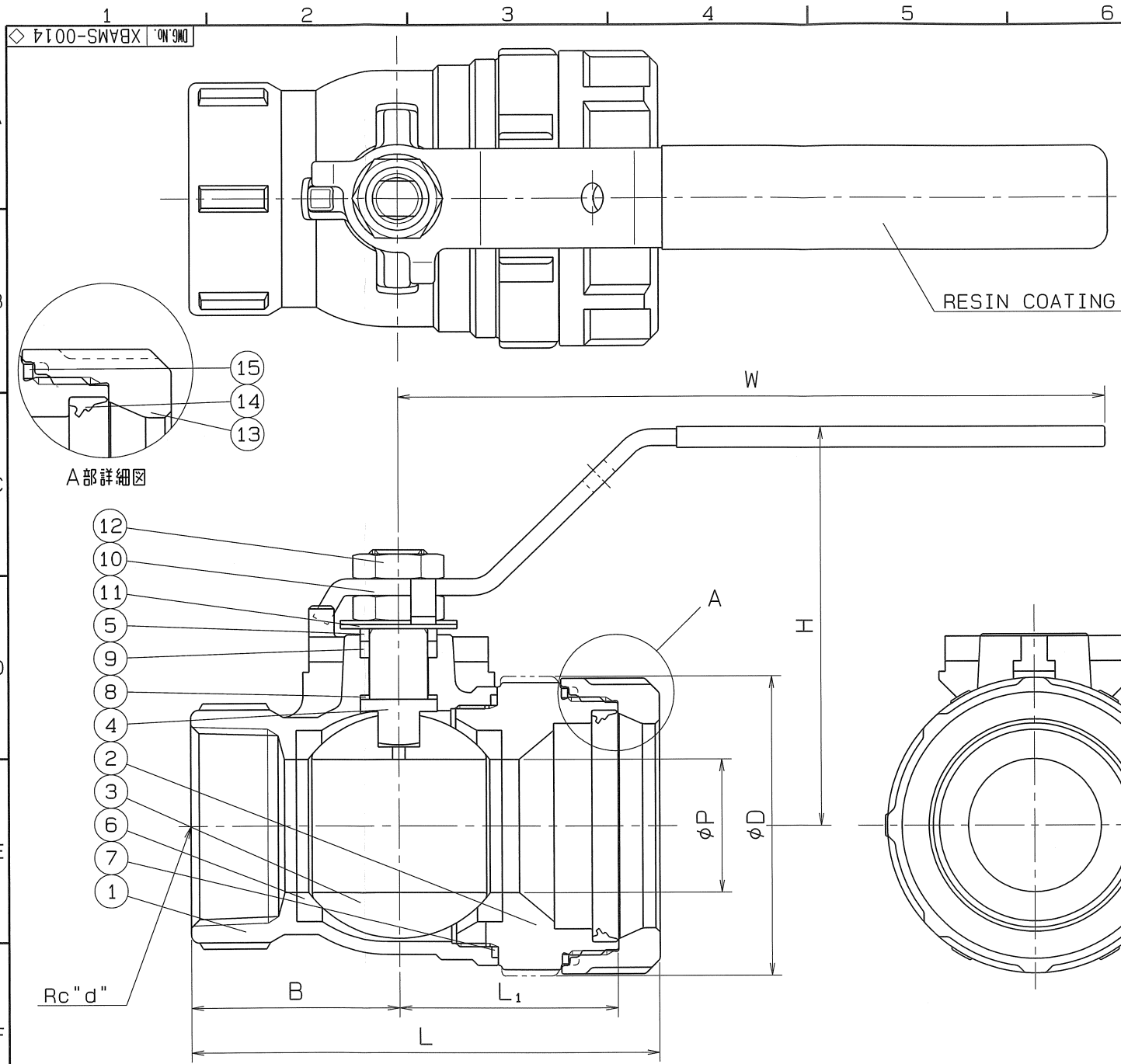
TYPE NJX-610 SIZE 40 Su

Dwg. No. XBAMS-0013 DATE MAR. 14. 2023.

THIRD ANGLE PROJECTION METHOD SCALE :
APPROVED CHECKED DESIGNED DRAWN



△		
△		
△		



SIZE	PIPE THREADS	P	L	H	W	A	L ₁	D	Q.TY
	d								
50Sux1 1/2	Rc 1 1/2	32	112.5	96	170	50	52.5	71	
60Sux2	Rc 2	40	129.5	102	170	60	57.5	86	

SPEC.			TEST PRESS.	
FLUID			SHELL	HYDRO 3.5 MPa
PRESS.	MAX	MPa	SEAT	AIR 0.6 MPa
TEMP.	MAX	℃	AIR	MPa

PIPE THREADS CONFORM WITH "JIS B 0203"
*MODIFIED P.T.F.E.

15	LOOSE STOPPER	1	SUS 304CSP	
14	RUBBER PACKING	1	SYNTHETIC RUBBER (HNBR)	
13	RATCHET NUT	1	SCS 13	
12	HEXAGON NUT	2	SUS 304	
11	CONICAL WASHER	2	SUS 304	
10	HANDLE	1	SUS 304	
9	GLAND PACKING	1	P.T.F.E.	
8	THRUST PACKING	1	P.T.F.E.	CARBON FILLED
7	GASKET PACKING	1	P.T.F.E.	
6	BALL SEAT	2	P.T.F.E.	*
5	GLAND	1	SUS 316	
4	STEM	1	SUS 316	
3	BALL DISC	1	SCS 13A	
2	BODY CAP	1	SCS 13	
1	BODY	1	SCS 13	

No.	NAME OF PARTS	Q.TY	MATERIALS	REMARKS
NAME NICE JOINT AND SCREWED ENDS MINI BALL VALVES				
TYPE	NJX-610	SIZE	50, 60 Su	
DMG.No.	XBAMS-0014	DATE	MAR. 14. 2023.	
THIRD ANGLE PROJECTION METHOD		SCALE	:	
APPROVED	CHECKED	DESIGNED	DRAWN	

O. N. INDUSTRIES LTD.